

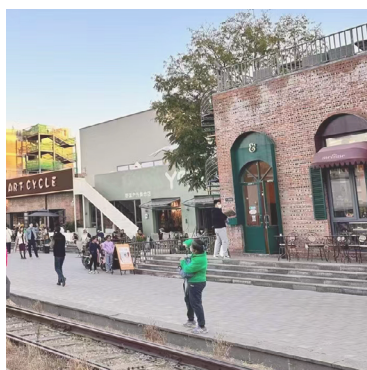
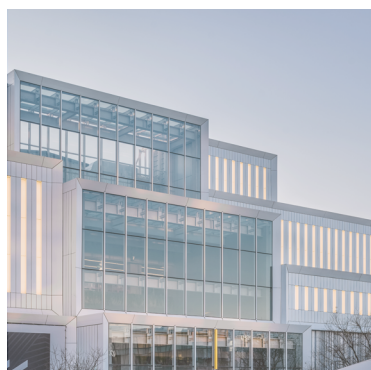


世界建筑

World Architecture

北京城市更新 | Beijing Urban Regeneration

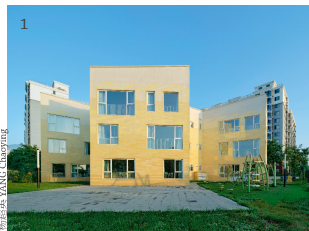
北京城市更新发展历程和政策演变：全生命周期管理和评估制度探索 | 城市更新背景下的控规编制方法研究：以北京回龙观、天通苑地区街区控规为例 | 工业用地更新背景下北京旧工业建筑保护利用的回顾与展望 | 城市更新背景下北京商圈改造趋势分析及策略建议 | 浅谈城市更新“四个一体化”的“首开经验” | 以IPD方法论促进城市更新多专业协同的应用研究 | 从“菜市场”到“邻里中心” | 城市更新背景下的规划共治：北京城市规划公众参与的方法、实践与机制 | 城市小微公共空间公众参与式微更新途径 | 更新·延续：危旧建筑改建可持续策略探讨 | 北京新动力金融科技中心 | 北京城市副中心北人厂区改造更新实践 | 冬奥社区更新改造 | 三里屯太古里西区改造 | 首创郎园 | 育英学校科学城学校 | 六一幼儿园科学城园 | 柠檬花：前沙涧幼儿园 | 七色·光之幼儿园 | 可开放幼儿园



柠檬花——前沙涧幼儿园，北京，中国

Neighbourhood Spark: A Star-Shaped Kindergarten in Qianshajian, Beijing, China, 2022

Crossboundaries



[大师做小品3]

业主：北京市海淀区教育委员会
设计方：Crossboundaries，北京
合伙人：蓝冰可，董灏
设计团队：崔雨柔，Marijana Simic，
甘力，Silvia Campi，于兆雄，顾畅，
黄彪，郝洪漪，王旭东
地块面积：4200m²
建筑面积：4800m²
设计时间：2019-2020
竣工时间：2022
摄影：杨超英，陈鹏宇

[Small Designs by Masters 3]

Client: Education Committee of Haidian District, Beijing
Architect: Crossboundaries, Beijing
Partners in Charge: Binke Lenhardt, DONG Hao
Design Team: Cynthia Cui, Marijana Simic, GAN Li, Silvia Campi, Sean YU, GU Chang, HUANG Biao, HAO Hongyi, WANG Xudong
Site Area: 4200 m²
Floor Area: 4800 m²
Design Period: 2019-2020
Completion Time: 2022
Photos: YANG Chaoying, CHEN Pengyu

1 外景
Exterior view

北京城市更新

2019年初，Crossboundaries 受邀在北京西北部快速发展的海淀区五环和六环区域设计了一所幼儿园。

Crossboundaries 选择了柠檬花造型，为重复平凡的环境创造生机，成为一个具有社区渗透性的学习和社交空间，既能满足学龄前儿童最大需求，又对社区的空间前景产生了积极影响。

6瓣柠檬花，从6个方向往中心聚合。班

级教学空间和一些辅助设施安排在外围的6个分支内；中心则成为一个聚集视线、交通动线和儿童活动的复合中枢，各间教室到达中心区域都一样便捷。教室提供了私密、舒适的学习与生活空间，而一门之隔，就是供所有儿童共享的自由玩耍和社交空间。这样的格局充分满足了儿童不同层面的日常需求——从进餐和午睡，到独享时光、小组玩耍和集体活动，空间集约高效。□

2 一层平面

Ground floor plan

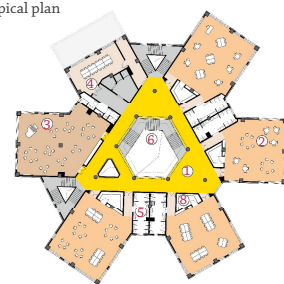


1-公共游玩活动
Public play/activity
2-生活单元
Classroom

3-后勤/辅助
Auxiliary room
4-办公/服务
Office/service

3 典型平面

Typical plan



5-卫生间
Bathroom
6-竖向交通
Vertical circulation

7-入口
Entrance
8-储物
Storage

In early 2019, Crossboundaries was invited to design a kindergarten on the Fifth and Sixth Ring Road Area of the rapidly developing Haidian District in northwest Beijing.

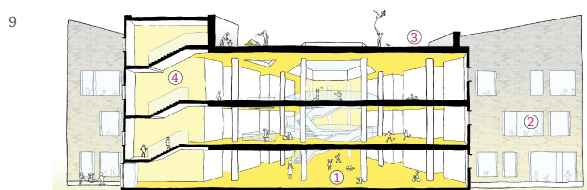
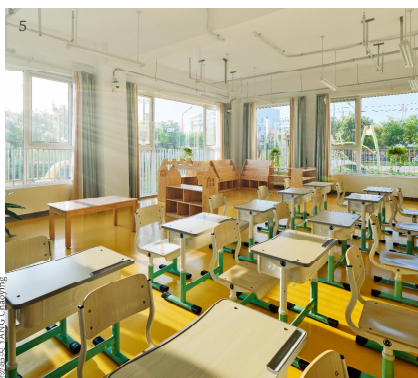
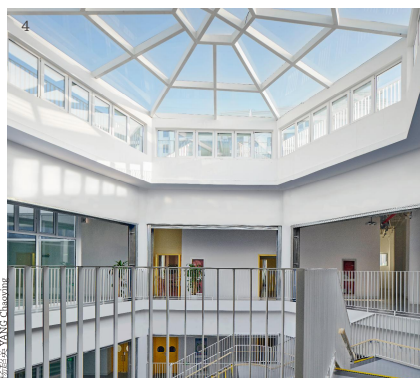
Crossboundaries opted for a solution that framed the site with a bold and dynamic appearance to contrast with the sterile surroundings. The design offered the specific qualities that correspond to the needs of the preschool children, providing a positive impact on the neighbourhood's spatial outlook.

This array of prisms organises the spaces, establishing iconic relationships with the changing images of its perimeter. It engages with the street corner and radiates in all directions,

breaking the strict south orientation of the residential buildings, and generating a layout of classrooms that has the quality of a tree house, looking out in many directions and receiving ample daylight.

This is how the form reminiscent of an asterisk shape was born: a spatial gem that not only meets the requirements but excels in its biggest priority - the sunlight. Each arm is intentionally separated and interconnected with shifting views, maximising the connections with its surrounding nature.

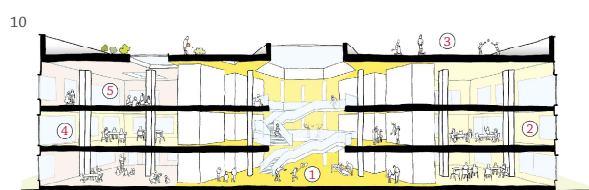
Each function is given a separate wing with a dynamic outline that bulges inwards and outwards. This design allows for the efficient subdivision of



1-公共游玩活动
Public play/activities

2-生活单元
Classroom

3-露台
Terrace



4-竖向交通
Vertical circulation

5-综合活动
Multifunctional room

6-后助/辅助
Auxiliary room

- 4 中庭
Atrium
- 5 教室
Classroom
- 6 外景
Exterior view
- 7 竖向交通
Vertical circulation
- 8 鸟瞰
Aerial view
- 9 公共空间剖面
Section of public space
- 10 中庭和教室剖面
Section of atrium and classroom

a rather big programme while creating a scale that appears natural, safe and inspiring.

Each floor features classrooms with generous windows, looking in three directions. The north-facing divisions serve as auxiliary spaces or multi-functional rooms. To complete the layout of the main educational spaces, the classrooms

are no longer traditional long hallways, but are connected by a single circulation hub in the form of a central atrium.

This centralised nature of the interior space responds well to the needs of young children, providing them with an easy sense of orientation and security. □